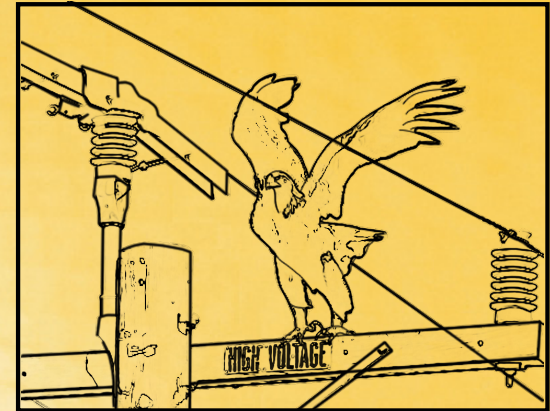




WILDLIFE PROTECTION

- Designed to cover over Crossarm mounted Insulators to help protect Birds and Critters from bridging between phases.
- Each unit should be installed on each Insulator/Phase on the Crossarm.
- Electrical faults induced by Birds and Critters can be deadly to the animals and potentially cause expensive outages.
- Two types, offset and centre depending on Insulator configuration.
- Excellent weathering resistance, time tested product.
- Easily snap clips together to form a sturdy installation

Wildlife protection



WPC-01

Wildlife Protection Cover,
450x133, Black, Offset



WPC-C1

Wildlife Protection Cover,
450x130, Black, Centre



**Electrically Tested
to 25KV
Class 3**

**Can be used with
Panther Tails to
extend barrier**



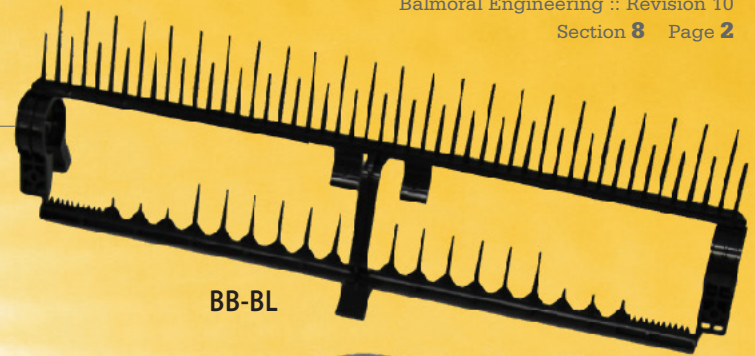
WILDLIFE PROTECTION

Bird Blocker

- Designed to be installed on Power Lines anywhere along the span or near the cross arm to prevent birds from landing or settling on the lines.
- Suits most cable sizes.
- Will keep vertical orientation and face upwards.
- UV stabilised with good electrical insulation properties.
- Rubber stoppers used on either side of the Bird Blocker to fix in place on the line.
- Can install multiple Bird Blockers “in series” along the line.
Where this is done, use rubber stoppers for every 10 Bird Blockers installed.

Item No.	Size	Base Material	Base Colour	Suits Cable Size
BB-BL	500x153mm	HDPE	Black	5mmØ–240mm ²
RS-BL	35x26mm	EPDM	Black	5mmØ–240mm ²

Parameter	Results (BB-B)
Withstand voltage	15KV for 1 minute
Heat resistance	No cracking or other damage at 60 degrees C
Cold resistance	No cracking or other damage at 20 degrees C
Crushing test	30N for 1 minute



BB-BL



RS-BL

